

view looking at west face

project: proposed club
house extensions

at: mullum mullum reserve
ringwood

date: 07/07/08
job: 08/4403

466 william street, p: 9682 6655
west melbourne 3003 f: 9682 4788

website: www.dcadesign.com.au



view looking at south west face

project: proposed club
house extensions

at: mullum mullum reserve
ringwood

date: 07/07/08
job: 08/4403

466 william street, p: 9682 6655
west melbourne 3003 f: 9682 4788

website: www.dcadesign.com.au



view looking at north face

project: proposed club
house extensions

at: mullum mullum reserve
ringwood

date: 07/07/08
job: 08/4403

466 william street, p: 9682 6655
west melbourne 3003 f: 9682 4788

website: www.dcadesign.com.au





view looking at north west face

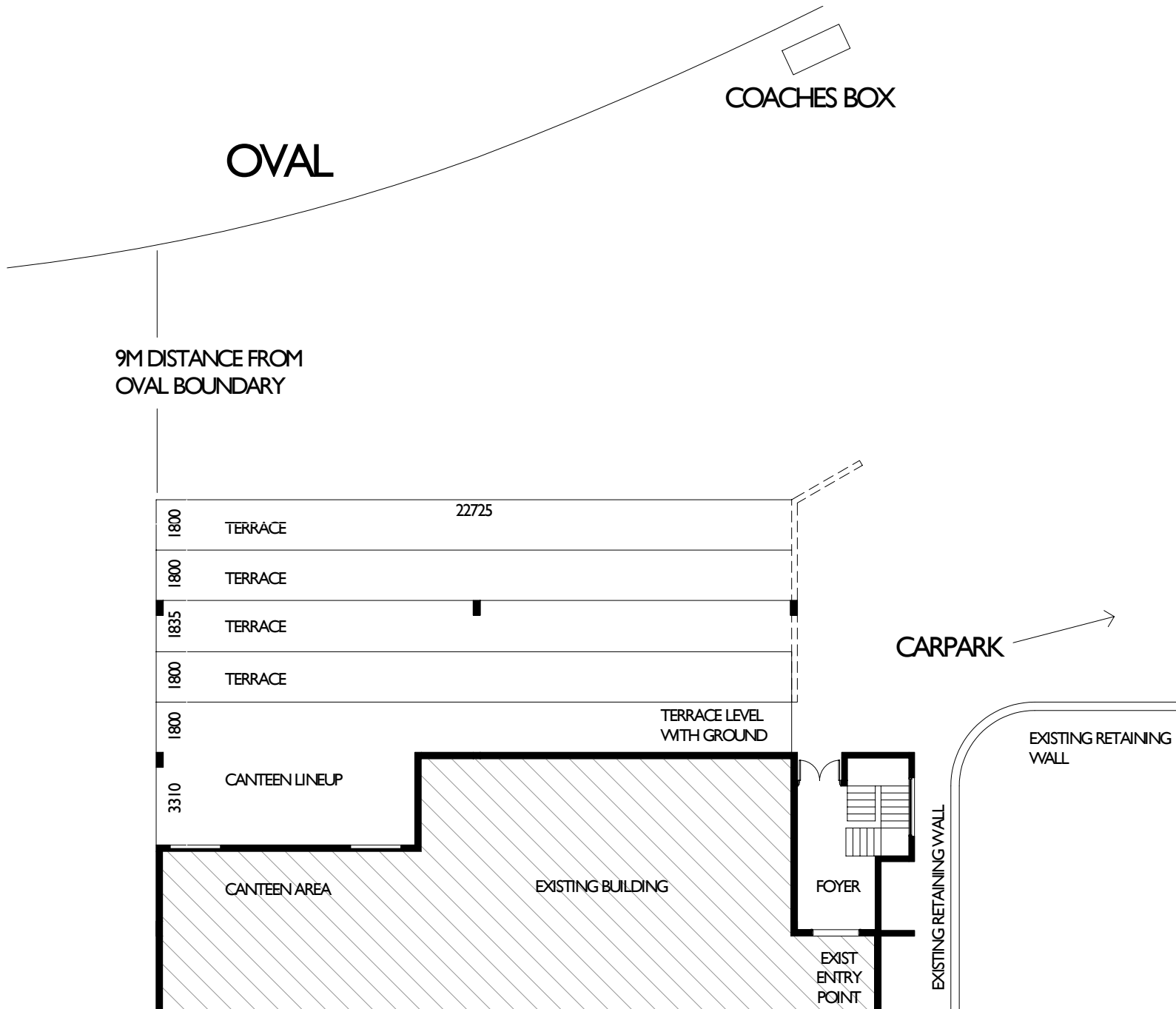
project: proposed club
house extensions

at: mullum mullum reserve
ringwood

date: 07/07/08
job: 08/4403

466 william street, p: 9682 6655
west melbourne 3003 f: 9682 4788

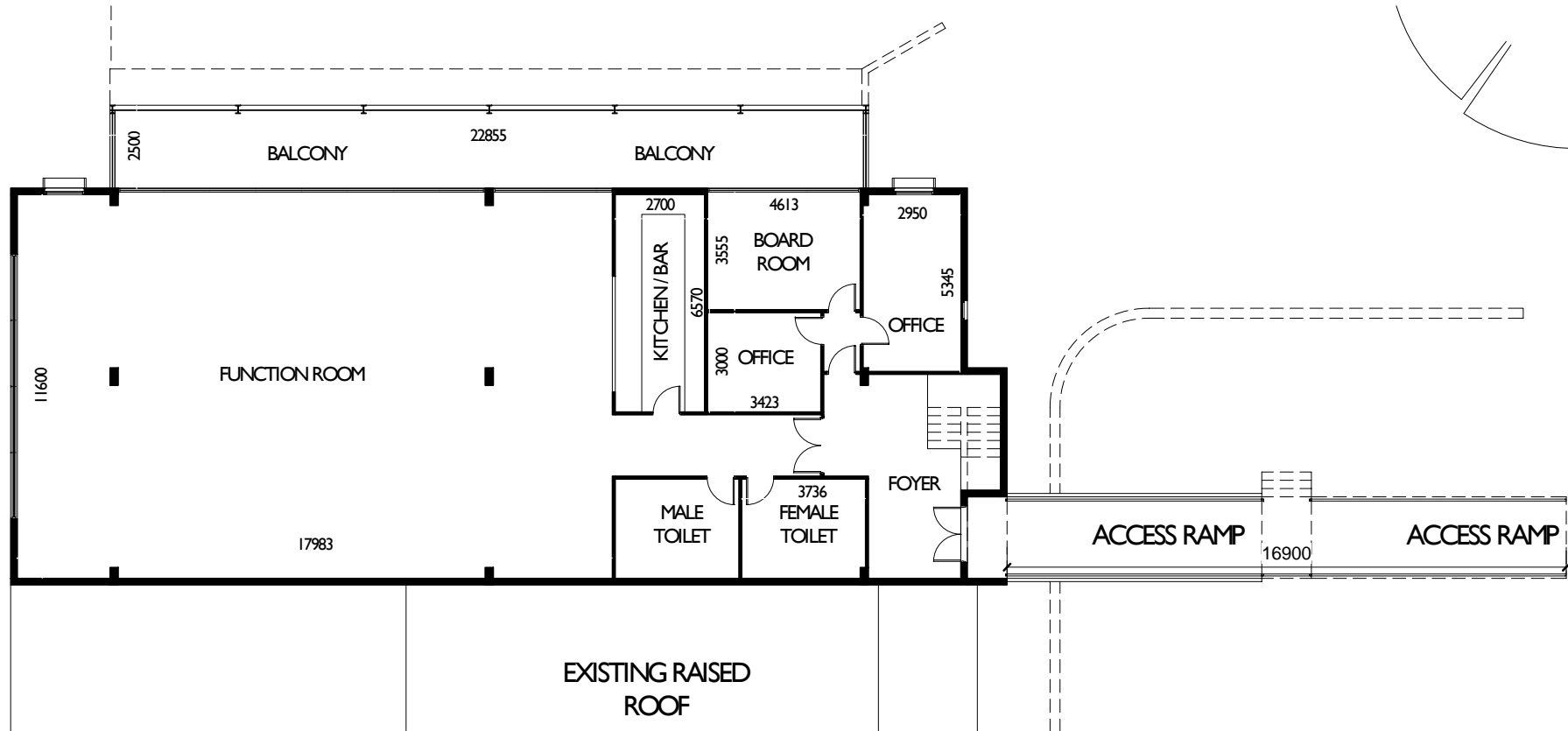
website: www.dcadesign.com.au



SK GROUND FLOOR PLAN

1 : 200

1



1

FIRST FLOOR

1 : 200

AREAS

TOTAL AREA : 350m²
 FUNCTION ROOM AREA : 220m²